

## W is For:

(Finished sample below shows the letter P)

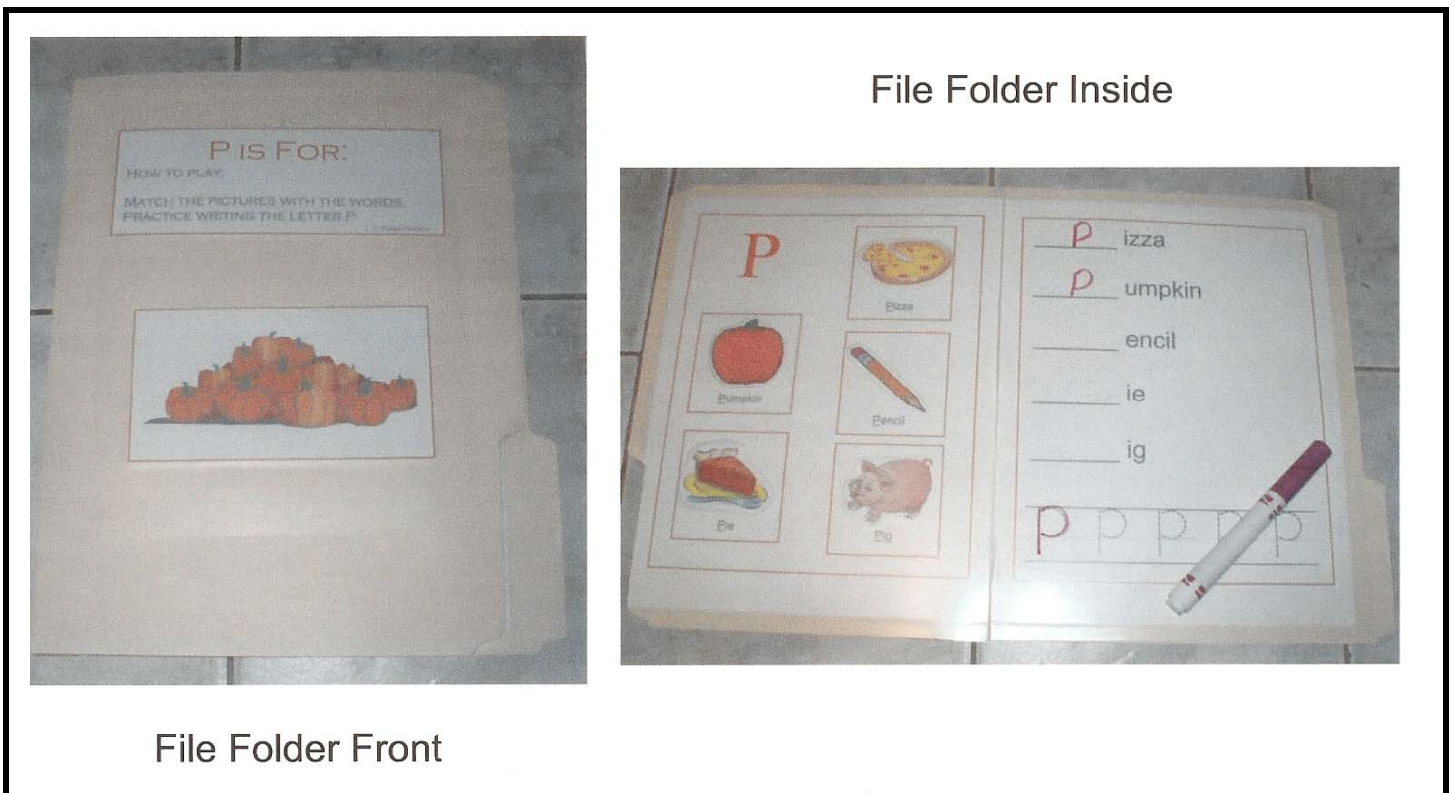
Print out the color or B & W set.

Color set: Print out the 3 sheets. (Printing up on white card stock will give you better quality). The 1<sup>st</sup> sheet is for the front of the file folder game and game pieces. Cut out the directions and picture for the front, and glue or tape to the front of the file folder. Use a self-laminating sheet or clear contact paper to place over for durability.

Place the 2 full size sheets inside the file folder using double sided tape or glue, and placing self-laminating sheets or clear contact paper over each side.

Place velcro in the squares and on the back of the game pieces. (This will keep the pieces from slipping when a child places it in the square). Have the children match the pictures with the words and practice writing the letter w.

Black and white set – Color and follow above directions.



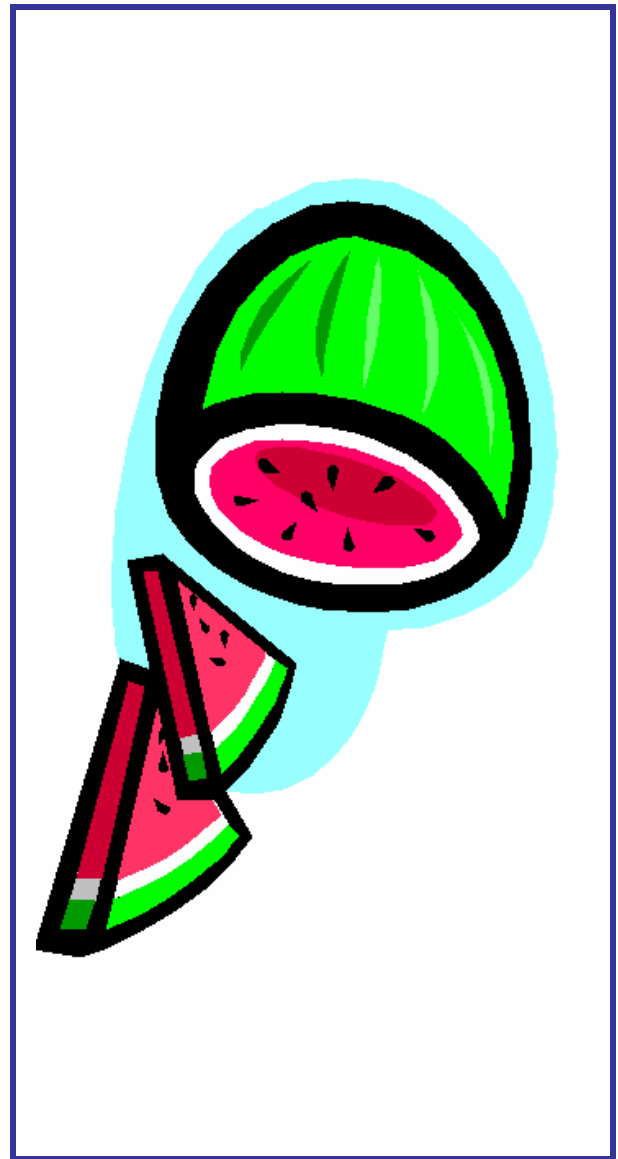
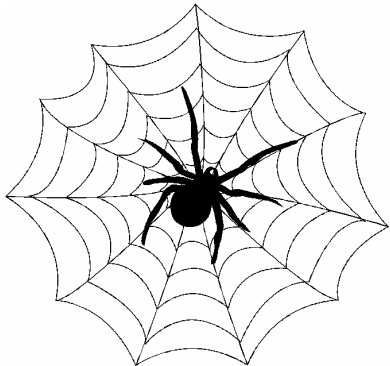
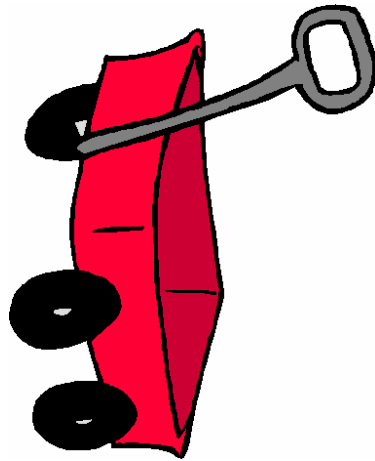
# W IS FOR:

HOW TO PLAY:

MATCH THE PICTURES WITH THE WORDS.  
PRACTICE WRITING THE LETTER W

1 - 2 - 3 Learn Curriculum

Graphic used: mooseberrygraphics.com



# W

Wallet

Walnut

Web

Wagon

Worm

\_\_\_\_\_ allet

\_\_\_\_\_ alnut

\_\_\_\_\_ eb

\_\_\_\_\_ agon

\_\_\_\_\_ orm

\_\_\_\_\_

-----

W W W W

\_\_\_\_\_

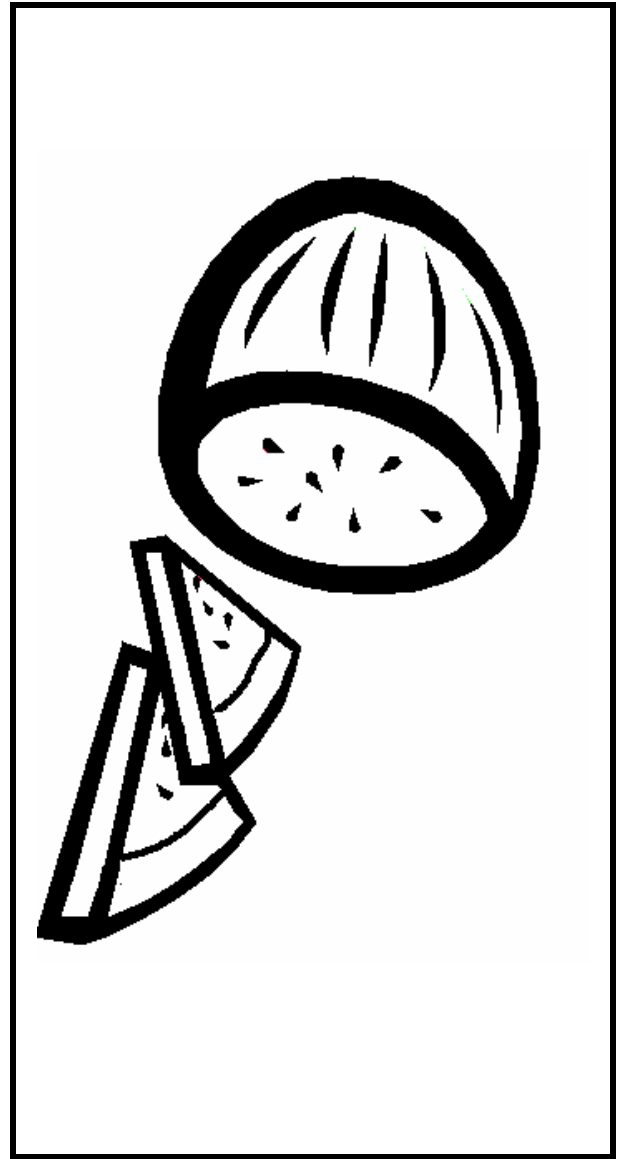
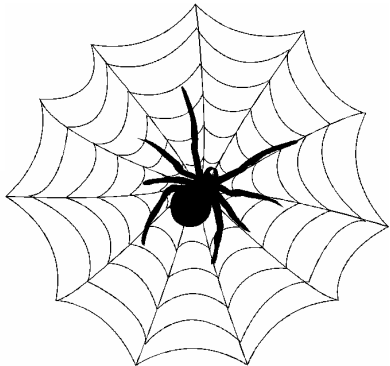
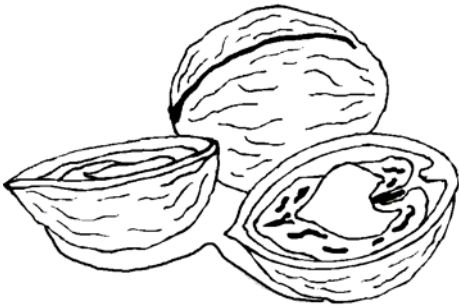
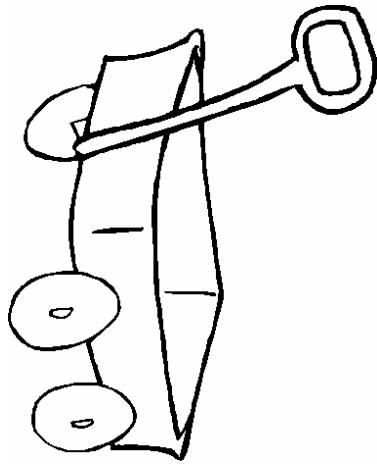
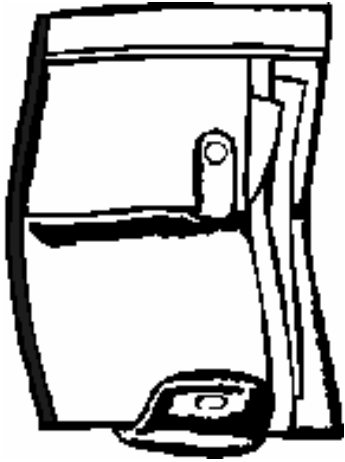
# W IS FOR:

HOW TO PLAY:

MATCH THE PICTURES WITH THE WORDS.  
PRACTICE WRITING THE LETTER W

1 - 2 - 3 Learn Curriculum

Graphic used: mooseberrygraphics.com



W

Wallet

Walnut

Web

Wagon

Worm

\_\_\_\_\_ allet

\_\_\_\_\_ alnut

\_\_\_\_\_ eb

\_\_\_\_\_ agon

\_\_\_\_\_ orm

\_\_\_\_\_

-----

W W W W

\_\_\_\_\_